

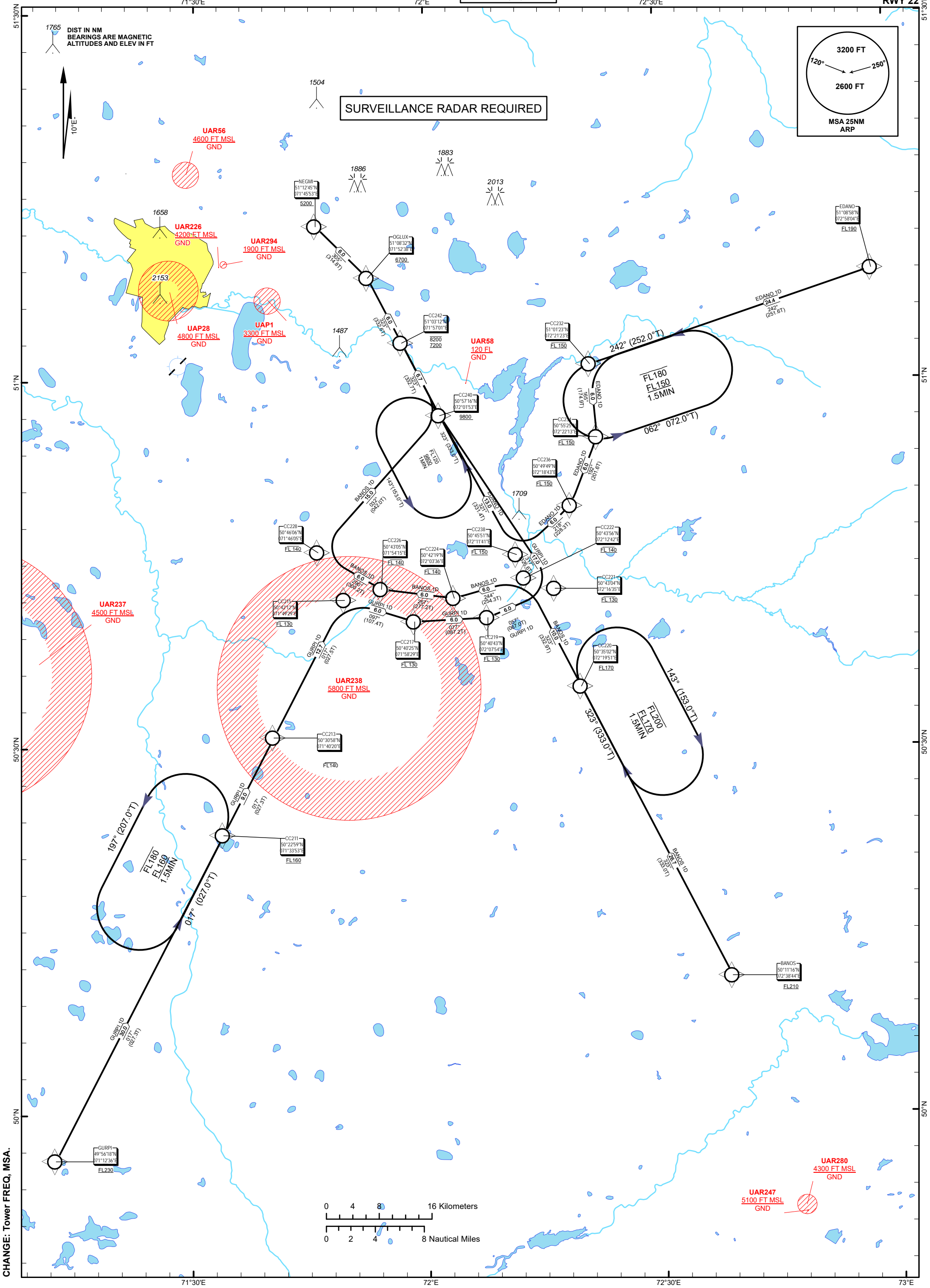
STANDARD ARRIVAL
CHART - INSTRUMENT
(STAR) - ICAO

TRANSITION ALT
10000 FT

ASTANA TOWER 135.5
ASTANA APPROACH 124.6
ASTANA RADAR 120.7
ASTANA ATIS(EN) 129.5
ASTANA ATIS(RU) 128.3

(RNAV 1 STAR BASED ON GNSS)
BANOS 1D, EDANO 1D, GURPI 1D

ASTANA
NURSULTAN NAZARBAYEV
INTERNATIONAL AIRPORT
RWY 22



TABULAR DESCRIPTION

BANOS 1D RWY22											
Serial Number	Path Descriptor	Waypoint Identifier	Fly - over	Course °M(°T)	Magnetic Variation(°)	Distance NM	Turn Direction	Altitude FT	Speed KT	VPA (°)	Navigation Specification
10	IF	BANOS	-		10	0	-	+FL210	-315	-	RNAV1
20	TF	CC220	-	323(333)	10	26.7	-	+FL170	-280	-	RNAV1
30	TF	CC222	-	323(332.9)	10	10	-	@FL140	-280	-	RNAV1
40	TF	CC224	-	244(254.3)	10	6	L	@FL140	-280	-	RNAV1
50	TF	CC226	-	267(277.2)	10	6	R	@FL140	-280	-	RNAV1
60	TF	CC228	-	290(300.2)	10	6	R	@FL140	-280	-	RNAV1
70	TF	CC240	-	32(42)	10	15	R	+9800	-250	-	RNAV1
80	TF	CC242	-	323(332.7)	10	6.7	L	+7200 -8200	-250	-	RNAV1
90	TF	OGLUX	-	323(332.6)	10	6	L	+6700	-250	-	RNAV1
100	TF	NEGMI	-	305(314.8)	10	6	L	+5200	-230	-	RNAV1

WAYPOINT LIST

BANOS 1D		
Waypoint Identifier	Coordinates	
BANOS	501116.00N	0723844.00E
CC220	503502.43N	0721951.13E
CC222	504356.03N	0721241.80E
CC224	504218.99N	0720336.37E
CC226	504304.68N	0715414.60E
CC228	504605.89N	0714605.08E
CC240	505715.58N	0720152.69E
CC242	510312.43N	0715700.84E
OGLUX	510831.82N	0715238.33E
NEGMI	511245.30N	0714552.60E

TABULAR DESCRIPTION

EDANO 1D RWY22											
Serial Number	Path Descriptor	Waypoint Identifier	Fly - over	Course °M(°T)	Magnetic Variation(°)	Distance NM	Turn Direction	Altitude FT	Speed KT	VPA (°)	Navigation Specification
10	IF	EDANO	-		10	-	-	+FL190	-315	-	RNAV1
20	TF	CC232	-	242(251.6)	10	24.4	-	@FL150	-280	-	RNAV1
30	TF	CC234	-	165(174.9)	10	6	L	@FL150	-280	-	RNAV1
40	TF	CC236	-	192(201.6)	10	6	R	@FL150	-280	-	RNAV1
50	TF	CC238	-	218(228.3)	10	6	R	@FL150	-280	-	RNAV1
60	TF	CC240	-	321(331.4)	10	13	R	+9800	-250	-	RNAV1
70	TF	CC242	-	323(332.7)	10	6.7	R	+7200 -8200	-250	-	RNAV1
80	TF	OGLUX	-	323(332.6)	10	6	L	+6700	-250	-	RNAV1
90	TF	NEGMI	-	305(314.8)	10	6	L	+5200	-230	-	RNAV1

WAYPOINT LIST

EDANO 1D		
Waypoint Identifier	Coordinates	
EDANO	510858.00N	0725804.00E
CC232	510123.17N	0722123.11E
CC234	505524.99N	0722213.30E
CC236	504949.27N	0721843.08E
CC238	504551.12N	0721140.77E
CC240	505715.58N	0720152.69E
CC242	510312.43N	0715700.84E
OGLUX	510831.82N	0715238.33E
NEGMI	511245.30N	0714552.60E

TABULAR DESCRIPTION

GURPI 1D RWY22											
Serial Number	Path Descriptor	Waypoint Identifier	Fly - over	Course °M(°T)	Magnetic Variation(°)	Distance NM	Turn Direction	Altitude FT	Speed KT	VPA (°)	Navigation Specification
10	IF	GURPI	-		10	0	-	+FL230	-315	-	RNAV1
20	TF	CC211	-	17(27.3)	10	30	-	+FL160	-280	-	RNAV1
30	TF	CC213	-	17(27.3)	10	9	-	-FL140	-280	-	RNAV1
40	TF	CC215	-	17(27.5)	10	12.7	-	@FL130	-280	-	RNAV1
50	TF	CC217	-	97(107.4)	10	6	R	@FL130	-280	-	RNAV1
60	TF	CC219	-	77(87.2)	10	6	L	@FL130	-280	-	RNAV1
70	TF	CC221	-	57(67)	10	6	L	@FL130	-280	-	RNAV1
80	TF	CC240	-	317(326.6)	10	17	L	+9800	-250	-	RNAV1
90	TF	CC242	-	323(332.7)	10	6.7	R	+7200 - 8200	-250	-	RNAV1
100	TF	OGLUX	-	323(332.6)	10	6	L	+6700	-250	-	RNAV1
110	TF	NEGMI	-	305(314.8)	10	6	L	+5200	-230	-	RNAV1

WAYPOINT LIST

GURPI 1D		
Waypoint Identifier	Coordinates	
GURPI	495618.00N	0711236.00E
CC211	502259.17N	0713352.65E
CC213	503057.99N	0714019.71E
CC215	504212.17N	0714928.90E
CC217	504024.91N	0715829.21E
CC219	504042.83N	0720754.44E
CC221	504303.73N	0721635.37E
CC240	505715.58N	0720152.69E
CC242	510312.43N	0715700.84E
OGLUX	510831.82N	0715238.33E
NEGMI	511245.30N	0714552.60E

CHANGE: Editorial.